

Automation Studio Explorer

IEC 61850 based System Explorer

- ▶ Explore any IEC 61850 compliant device via LAN/WAN network
- ▶ Benefit from configuration-free plug-and-play operation
- ▶ Easy to use integrated user interface environment

System Browser

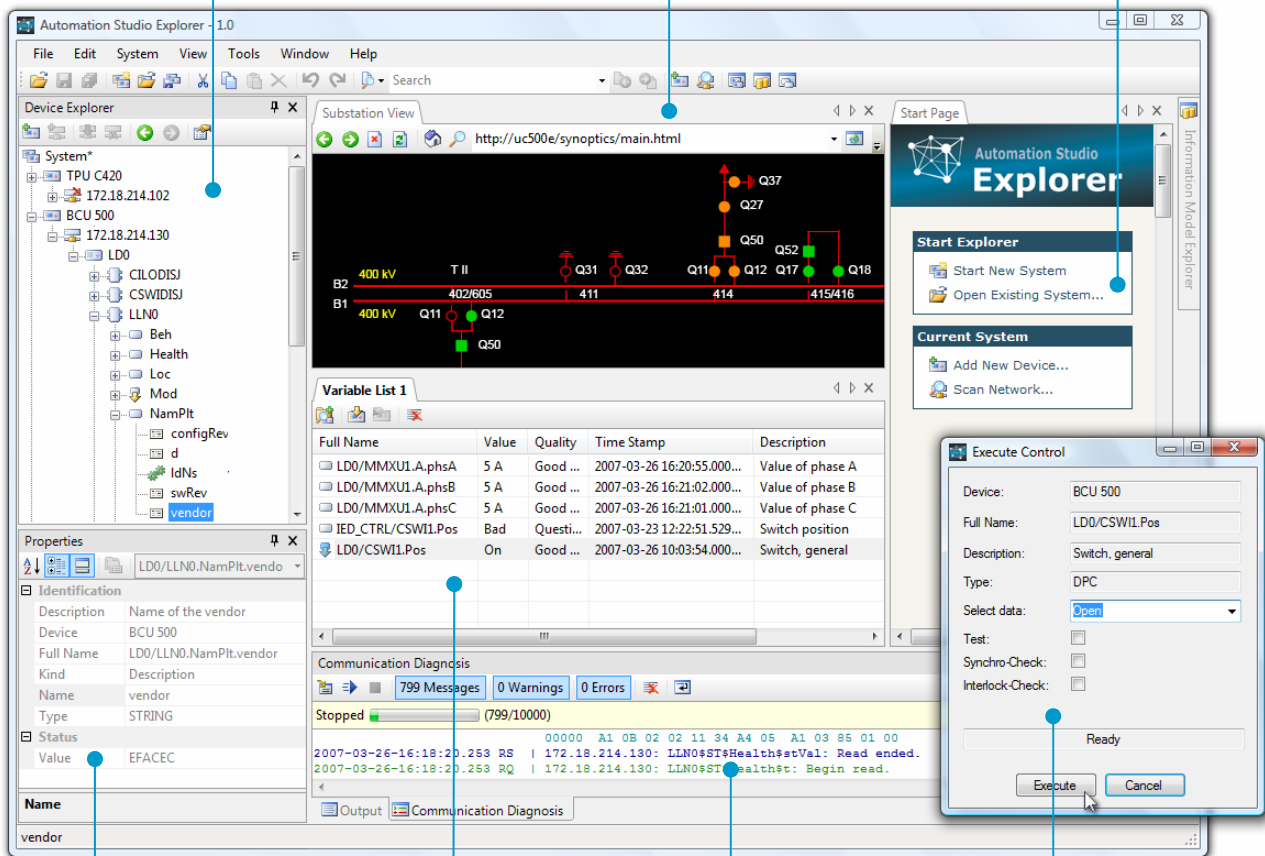
- Device data model browsing
- Automatic object and type finding
- Device Web server access
- Configurable taxonomy

Integrated Web Browser

- Navigation to device Web servers
- Navigation to device related corporate maintenance

Start Page

- Easy application navigation



Property Pad

- Device and data model property browsing and editor

Object Lists

- Configurable views
- Dynamic value updates
- Control execution
- Grouping by common properties

Diagnosis

- Communication trace

Control Window

- Control execution

Due to the continuous development, the characteristics may change without notice. Not valid as a contractual item.



EFACEC Engenharia, S.A.

Main Office
Rua da Garagem 1 - Ap. 527 - 2796-853 Carnaxide, Portugal | Tel. +351 21 416 36 00 | Fax +351 21 416 37 40
Office
Rua Eng. Frederico Ulrich - Ap. 3078 - 4471-907 Moreira Maia, Portugal | Tel. +351 22 940 20 00 | Fax +351 22 948 54 28 | e-mail: ase.eng@efacec.pt | web: www.efacec.pt

License 27035



Version 1.1