

# Automation Studio Explorer

## IEC 61850 based System Explorer

- ▶ Explore any IEC 61850 compliant device via LAN/WAN network
- ▶ Benefit from configuration-free plug-and-play operation
- ▶ Easy to use integrated user interface environment

### System Browser

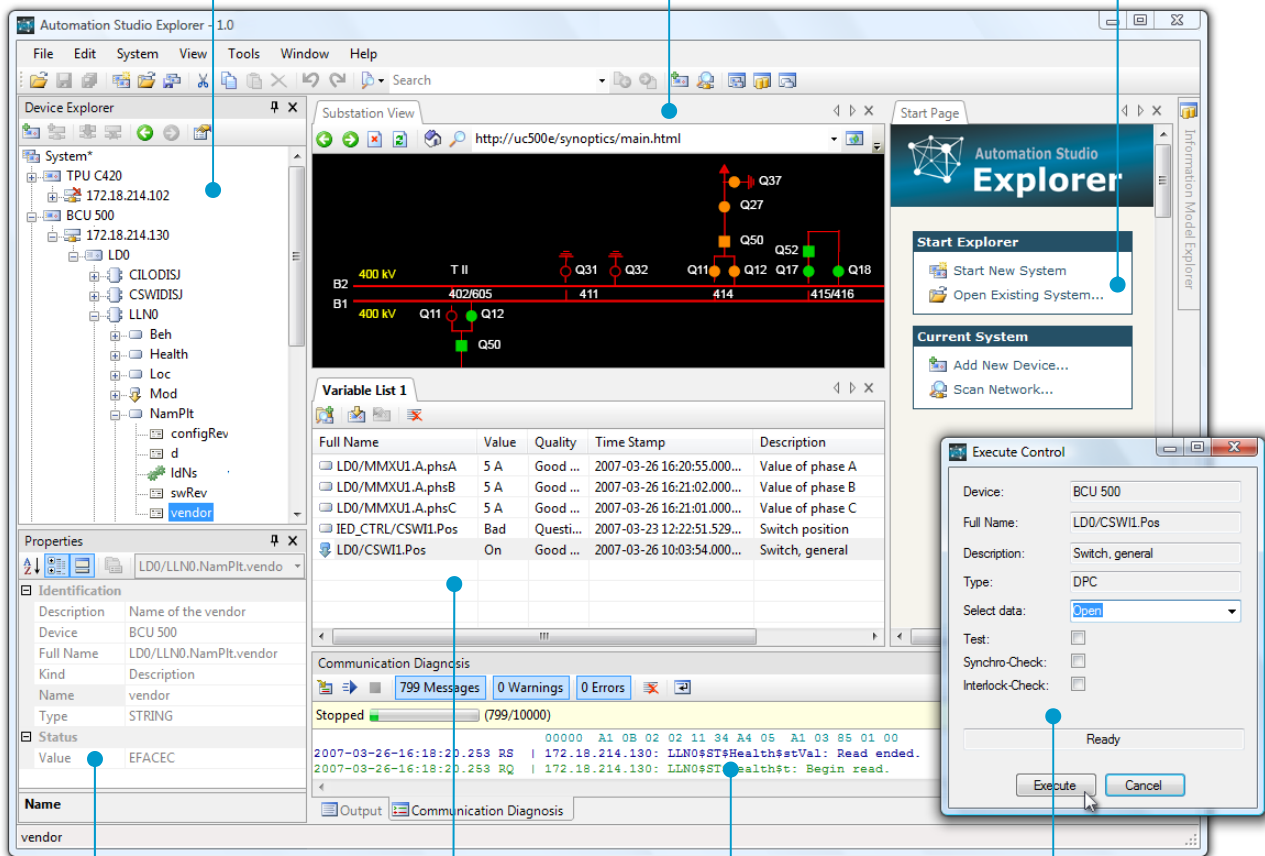
- Device data model browsing
- Automatic object and type finding
- Device Web server access
- Configurable taxonomy

### Integrated Web Browser

- Navigation to device Web servers
- Navigation to device related corporate maintenance

### Start Page

- Easy application navigation



### Property Pad

- Device and data model property browsing and editor

### Object Lists

- Configurable views
- Dynamic value updates
- Control execution
- Grouping by common properties

### Diagnosis

- Communication trace

### Control Window

- Control execution



# Automation Studio Designer

## IEC 61850 based System Designer

- ▶ Single tool for system specification, design and life-cycle management
- ▶ Evolution from device models to system and function oriented models
- ▶ Benefit from IEC 61850 compliance and IEC 61131-3 programming
- ▶ Integrate with third-party tools via SCL import/export
- ▶ Automatically build, deploy and synchronize with intelligent electronic devices
- ▶ Reuse definitions by creating or using libraries from vendors, utilities, integrators or standard-based

### Toolbox

- Context-aware object palette

### Diagram Editors

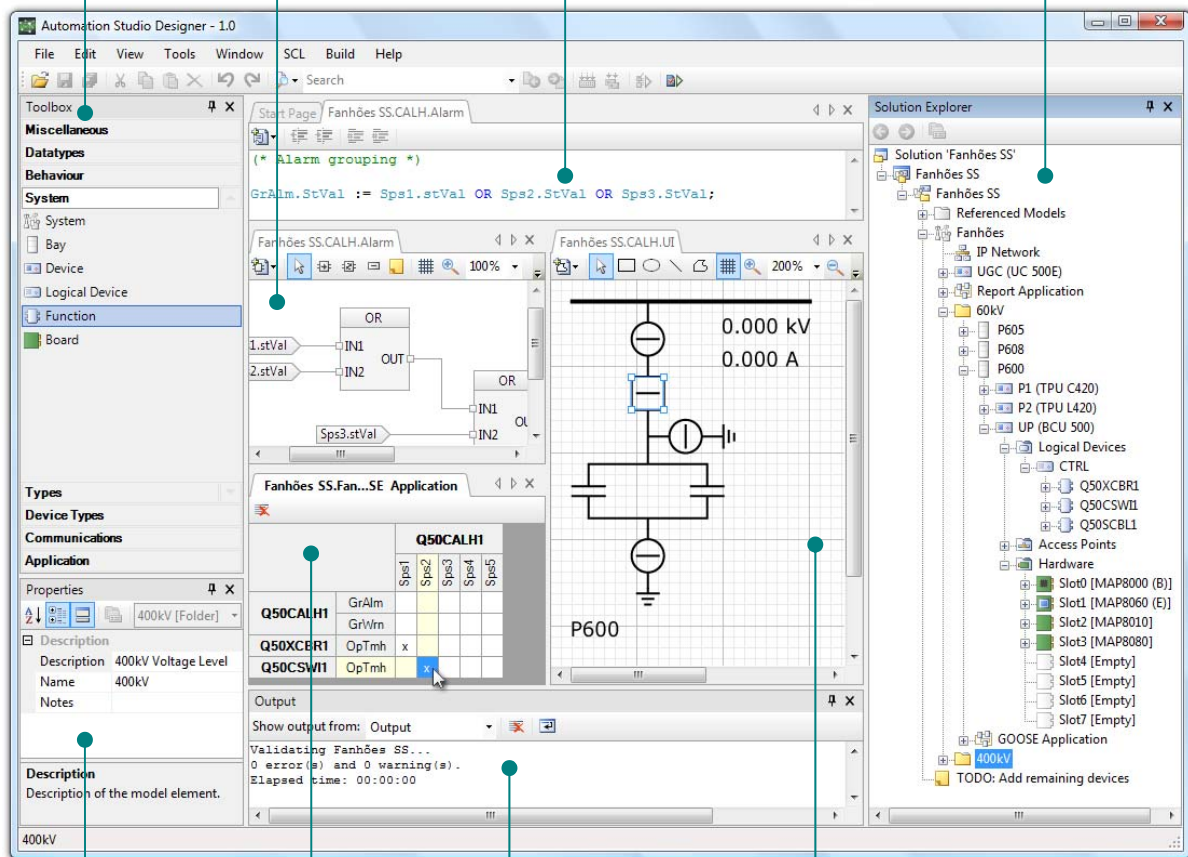
- Interactive visual editing

### Text Editors

- Automatic code completion and code bit insertion
- Syntax highlighting

### Object Explorer

- System model navigation
- Advanced drag-and-drop editing
- Integrated system view



### Property Pad

- Context-dependent property browser and editor

### Matrix Editor

- Data object mapping
- Networked applications
- Device applications

### Output

- Tool execution messages and error output

### User Interface Design

- Interactive schematic editor

